

## Product Name

APCO Poolkote Epoxy Paint

## Product Description

Poolkote epoxy is a very hard and durable two-pack polyamide cured epoxy coating suitable for atmospheric and immersion conditions.

## Product benefit

Long term durability  
 easy Maintenance  
 Resistance to Fungus and algae growth  
 Excellent resistance to Chlorinated water  
 Extremely low water vapour permeability

## Product features

Available Packs	1 Lit, 4 Lit, 10 Lit, 20 Lit
Sheen Variants	Semi Gloss
Coverage	Coverage - 12-14 Sqm/lit/coat* *Actual coverage may vary from the quoted coverage due to factors such as method and condition of application and surface roughness and porosity.
Colour Options	Poolkote shade card. White, Pool Blue, Pool Green, Cream and Pastels

## Areas of Application

Concrete swimming pools, other suitably primed substrates.

## How to Apply

### Pre Painting Steps



The surface should be in sound condition, clean, dry and free from contaminants prior to coating. Contaminants like body grease, suntan lotion, oil, etc. should be completely removed by cleaning. The surface should be rough enough to enable good adhesion. (approximately like 60 grit sandpaper).

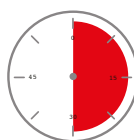


New concrete surface must be fully cured and treated before application of this product. If painting over old and fully cured epoxy paint, this product can be applied directly after proper cleaning.

## Paint Application / System

- Brush, Roller or Spray. Please use the method best suited to your requirement and skill.
- Stir the contents thoroughly using a broad paddle.
- On bare concrete and cement render, apply first coat with 20-30% dilution to seal the surface. Follow with two full coats.
- Ensure minimum recoating interval time as per requirement

## Drying Time



Touch Dry

60 min

## Finish - Type / Category

Poolkote Epoxy paint

## Additional Information

	Never use on surfaces, previously painted with Chlorinated Rubber Pool paint unless scrapping it out completely.
	The best inter-coat adhesion is achieved when the subsequent coat is applied before the preceding coat is fully cured. After prolonged exposure times it may be necessary to roughen the surface to ensure inter-coat adhesion.
Flammability	Highly flammable, Dangerous goods class 3.2 Flash point less than 18 degree Celsius UN1263 PG II
Safety Precautions	<ul style="list-style-type: none"><li>• Do not apply when surface temperature is below 10°C.</li><li>• Provide adequate ventilation during use.</li><li>• Keep out of reach of children.</li><li>• Check cross cut adhesion of old paint before repainting.</li><li>• Under normal conditions a week's curing is required to develop full hardness &amp; resistant properties.</li></ul>

### DISCLAIMER:

Although the facts and suggestions in this publication are based on our own research and are believed reliable, we cannot assume any responsibility for performance or results obtained through the use of our products herein described, nor do we accept any liability for loss or damages directly caused by our products. The user is held to check the quality, safety and all other properties of our product prior to use. Nothing herein is to be taken as permission, inducement or recommendation to practice any patented invention without a license.

 BRILLIANT PAINTS, BRILLIANT COLOURS (Division of Asian Paints (SP) Limited)	<b>FACTORY:</b> P.O. Box 694, Lautoka, FIJI. Ph: 679 6662799; Fax: 679 - 6663959 Email: contact.fiji@apcocoatings.com	<b>SUVA OFFICE:</b> P.O. Box 4202, Samabula, Suva, FIJI. Ph : (679) 3371267/68; Fax: (679) 3371269 Email: contact.fiji@apcocoatings.com
---	--	--